

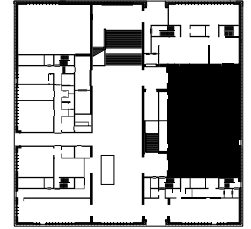


Ballroom

The elegant one – 100 to 600 people

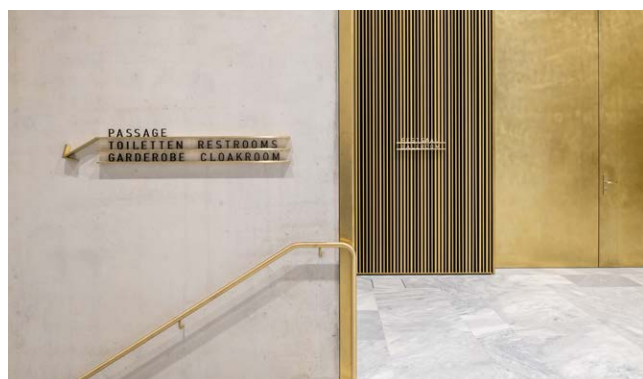
Ballroom

The elegant one – 100 to 600 people



In the new museum extension by David Chipperfield, your guests can immerse themselves in an elegant ambience. The large, multifunctional Ballroom and stage can be used flexibly according to your needs – from a banquet, standing reception or conference to a concert setting, film screening, performance or party, including a combination of these options. The exclusive hall with state-of-the-art event technology allows for subdivision of space or open use of the total area of 465 m² by up to 600 guests.

In addition to elegance and modernity, the banqueting hall offers additional amenities for contemporary event operations: a multifunctional, well-equipped catering kitchen with its own access with its own access road; advantageous logistics for deliveries and drop-offs; a cloakroom for performers and acoustic optimisation in the ballroom according to the type of event.



SIZE

ca. 465 m² total area
100 – 600 persons

Hall: length 28.3 m, width 16.5 m,
height 5.10 m
Stage: width 10 m, depth 5.2 m
maximum capacity: 600 persons

EQUIPMENT AND TECHNOLOGY

Included in the rental price: seating, basic lighting, lectern, screen

At an additional charge: optional performance-quality sound and lighting technology as well as flexible stage design options (podium, orchestra, etc.)

ENLARGEMENTS

- Outdoor areas in the garden
- Apéro zones in the entrance hall
- Additional rooms for meetings and seminars

RENT PRICE

7500 CHF / day plus additional costs
(including set-up and cleaning)

FRAMEWORK PROGRAMME

The Kunsthaus offers you a wide range of options for inspiring and varied social programmes ranging from private museum tours to interactive workshops and tailor-made art experiences. We will promptly submit a proposal based on your preferences and needs.

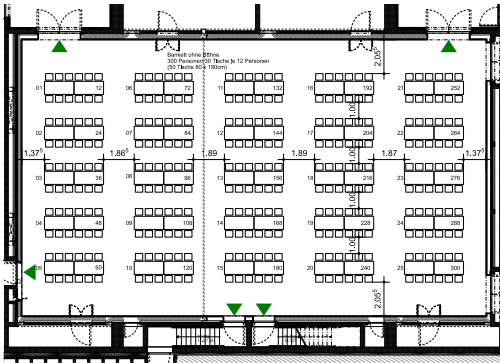
CONTACT

events@kunsthaus.ch
+41 (0)44 253 84 73

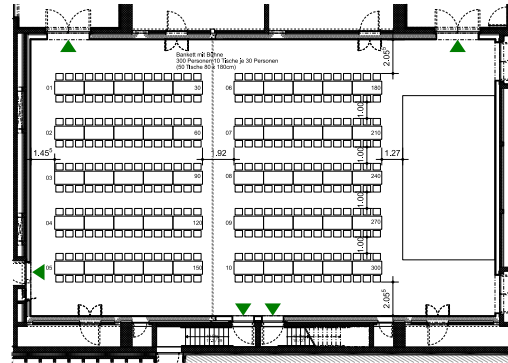
Ballroom

Exemplary forms of use and furnishing

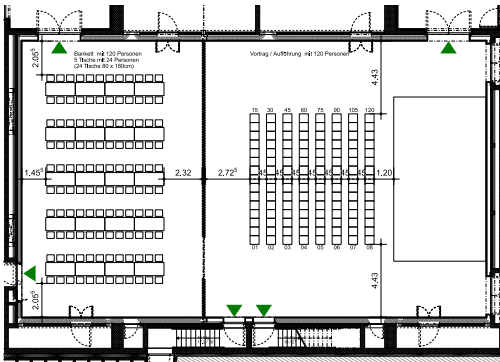
1. BANQUET



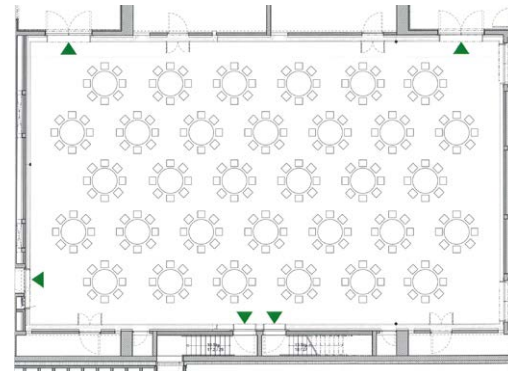
Banquet without stage (up to 360 persons)
accommodates 30 tables of 12 guests (80 x 180 cm)



Banquet with stage (up to 300 persons)
accommodates 10 rows of tables (50 x 80 x 180 cm),
each row seating 30 guests



Banquet plus performance (up to 120 persons)
Section 1: Banquet with 5 rows of tables (24 x 80 x 180 cm)
Section 2: 120 seats with theatre seating



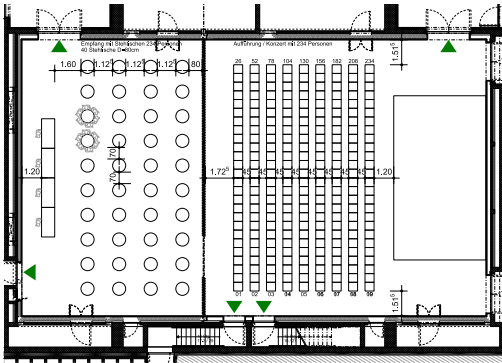
Banquet without stage (up to 256 persons)
accommodates 32 round tables (150 cm) of 8 guests

Banquet with stage (up to 200 persons)
accommodates 25 round tables (150 cm) of 8 guests

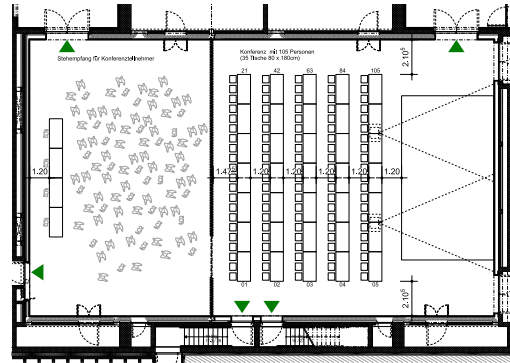
Ballroom

Exemplary forms of use and furnishing

2. STANDING RECEPTION PLUS PERFORMANCE OR CONFERENCE

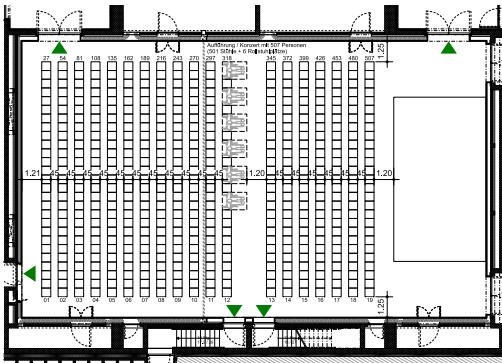


Standing reception plus performance (up to 230 persons)
 Section 1: 40 high tables (80 cm)
 Section 2: 230 seats with theatre seating



Standing reception plus conference (up to 100 persons)
 Section 1: Standing reception with high tables and buffet tables
 Section 2: 35 tables (80 x 180 cm) with 100 seats plus stage

3. PERFORMANCE



Performance / concert (up to 500 persons)
 Seated: stage and 500 seats with theatre seating

Performance / concert (up to 600 persons)
 Standing: stage (no seating)

4. PARTY

Room can be used flexibly (DJ, cocktails, etc.) with optional subdivision of space to accommodate 100 or more persons.